

N O Z Z L E S

CATALOG

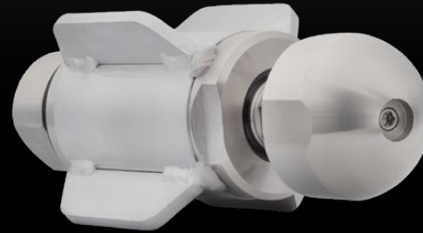
2025



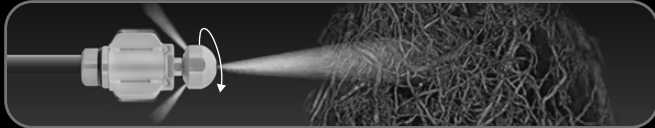
DEEP CLEANING

ROOTS | LIMESCALE | SOAPS

TARANTULA 1"



Optional front jet



Ceramic inserts



Slow rotation

Thread: 1"

Pipe diameter: 12" - 24" (recommended)

Jets: 2 x M10 // 25°

Waterflow: from 53 gpm

Dimensions: 5" x 9"

Weight: 9.92 lbs

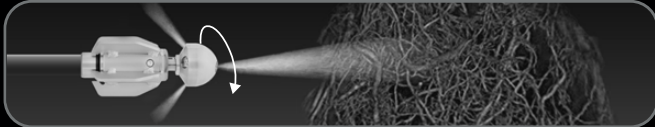
Price: USD \$1,499.00

Designed for pipe maintenance, especially when the removal of roots obstructing pipes is required.

TARANTULA 3/4"



Optional front jet



Ceramic inserts



Slow rotation

Thread: 3/4"

Pipe diameter: 10" - 16" (recommended)

Jets: 2 x M8 // 25°

Waterflow: 26 to 57 gpm

Dimensions: 4" x 9"

Weight: 4.85 lbs

Price: USD \$1,099.00

Just like the 1" model, our 3/4" Tarantula stands out for its ability to cut and remove roots from inside pipes thanks to its head with two jets that spins automatically.

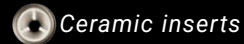
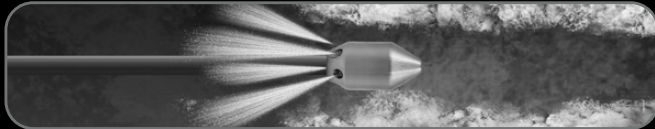
GENERAL CLEANING

SOAP | DEGREASING | CLEANING

GRENADE 60



Optional front jet



Thread: 1" & 3/4"

Pipe diameter: 8" - 12" (recommended)

Jets: 6 x M8 // 30° - 10°

Waterflow: from 16 gpm

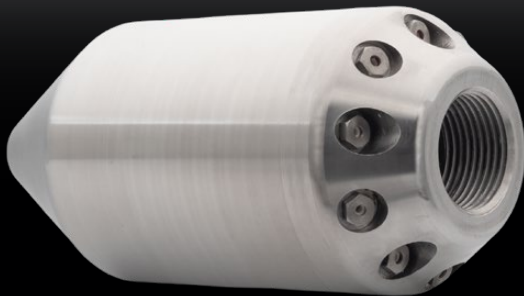
Dimensions: 2" x 4"

Weight: 2.87 lbs

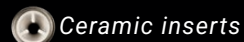
Price: USD \$355.00

Nozzles with rear jets at different angles for general cleaning, removing soap, grease, and all kinds of common buildup inside the pipe system.

GRENADE 80



Optional front jet



Thread: 1" & 3/4"

Pipe diameter: 10" - 24" (recommended)

Jets: 10 x M8 // 30° - 10°

Waterflow: from 32 gpm

Dimensions: 3" x 7"

Weight: 8.82 lbs

Price: USD \$538.00


Known for its efficiency and functionality, with rear jets at 30° and 10° that ensure water reaches the pipe walls effectively for optimal cleaning performance.

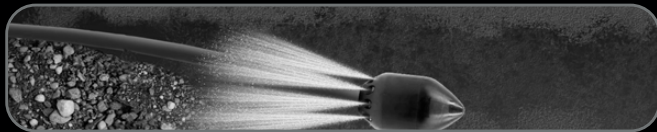
BOTTOM CLEANING

DIRT | SAND | DEBRIS

GRENADE 100



 *Ceramic inserts*



Thread: 1" & 3/4"

Pipe diameter: 12" - 24" (recommended)

Jets: 10 x M8 // 7° - 15°

Waterflow: from 42 gpm

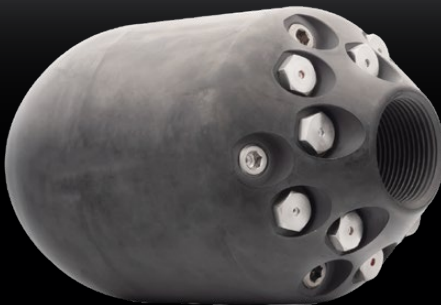
Dimensions: 4" x 7"


Weight: 8.82 lbs

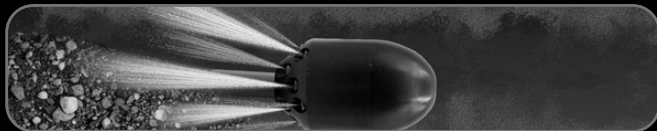
Price: USD \$744.00

Its jets are strategically positioned to maximize the dragging of sediment and built-up dirt, allowing for a deep and uniform cleaning throughout the pipe interior.

GRENADE 120



 *Ceramic inserts*



Thread: (1" - 1/4") & 1"

Pipe diameter: 12" - 32" (recommended)

Jets: 15 x M13 // 7° - 15° - 20°

Waterflow: from 53 gpm

Dimensions: 5" x 7"

Weight: 22 lbs

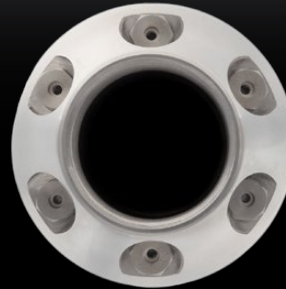
Price: USD \$1,170.00

It is built to release water jets in a laminar flow, without turbulence, creating high-impact streams. Perfect for removing sand and stones from the bottom of the pipelines.

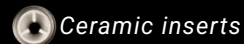
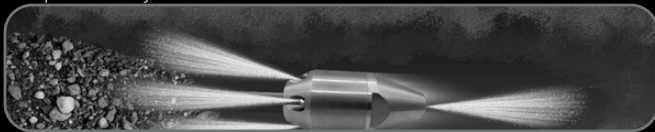
BOTTOM CLEANING

DIRT | SAND | DEBRIS

BULLET GRENADE 60



Optional front jet



Ceramic inserts

Thread: 1" & 3/4"

Pipe diameter: 8" - 16" (recommended)

Jets: 6 x M8 // 30° - 10°

Waterflow: from 16 gpm

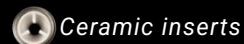
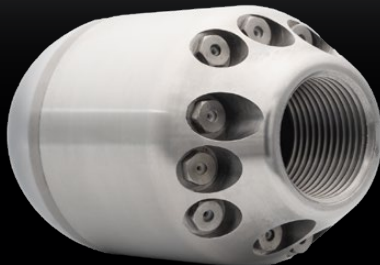
Dimensions: 2" x 4"

Weight: 2.87 lbs

Price: USD \$355.00

Specially designed to travel long distances quickly, the combination of different rear jet angles provides versatility that significantly improves cleaning efficiency.

GRENADE 70



Ceramic inserts

Thread: 1" & 3/4"

Pipe diameter: 8" - 16" (recommended)

Jets: 12 x M8 // 7° - 14° - 21°

Waterflow: from 32 gpm

Dimensions: 3" x 5"

Weight: 4.4 lbs

Price: USD \$488.00

Made of stainless steel, it offers durability and strength, and stands out for its ability to remove debris from the bottom of pipes thanks to its six powerful rear jets.

BOTTOM CLEANING


DIRT | SAND | DEBRIS

FLOUNDER



SWIVEL FITTING INCLUDED



 *Ceramic inserts*



Thread: 1" or 3/4"

Pipe diameter: 10" - 28" (recommended)

Jets: 8 x M8 // 5° - 10°

Waterflow: from 53 gpm

Dimensions: 6"x9" // 6"x13" (swivel fitting)

Weight: 20 lbs

Price: USD \$930.00


Drag and bottom-cleaning nozzle with a flat shape and an internal channeling system that increases thrust power, making it perfect for cleaning the bottom of pipelines.

FRANKENSTEIN



SWIVEL FITTING INCLUDED



 *Ceramic inserts*



Thread: 1" or 3/4"

Pipe diameter: 12" - 24" (recommended)

Jets: 15 // 15°

Waterflow: from 53 gpm to 79 gpm

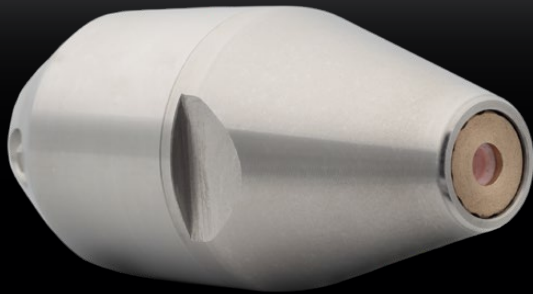
Dimensions: 4" x 7"

Weight: 22 lbs

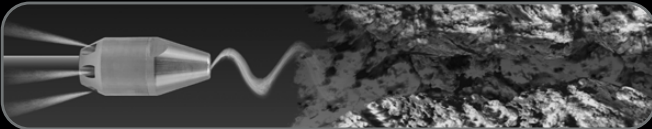
Price: USD \$925.00


Designed with a tubular body, it includes an internal counterweight to maintain stability during operation, ensuring the water jets always hit the bottom of the pipe.

ALIEN 1"



Rotating front jet



 Ceramic inserts

Thread: 1" & 3/4"

Pipe diameter: 8" - 17" (recommended)

Jets: 6 X M8 // 30° - 10° + 1 rotating front jet

Waterflow: from 42 to 79 gpm

Dimensions: 2" x 5"

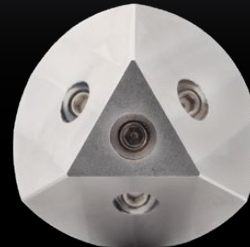
Weight: 3.46 lbs

Price: USD \$477.00

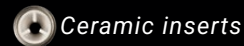
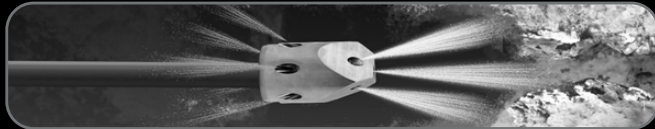
Its conical shape and rotating front jet allow it to drill and move forward quickly, providing a thorough and effective unclogging performance.

DEEP UNBLOCKING

BREAKER



Optional front jet



Ceramic inserts

Thread: 1" & 3/4"

Pipe diameter: 8" - 20" (recommended)

Jets: (R) 6 X M6 (F) 3 X M6

Waterflow: from 42 gpm

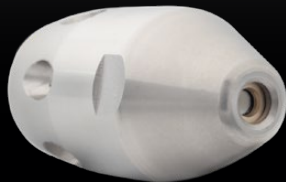
Dimensions: 2" x 5"

Weight: 1.5 lbs

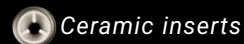
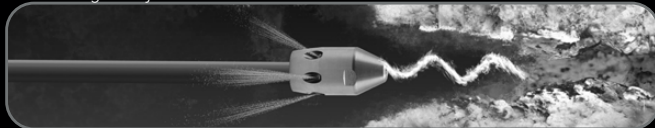
Price: USD \$205.00

Cutting head with three front jets and six rear jets, the breaker plows through everything in its path, delivering extreme and efficient cleaning performance.

ALIEN 3 / 4 "



Rotating front jet



Ceramic inserts

Thread: 3/4"

Pipe diameter: 8" - 16" (recommended)

Jets: 6 X M6 // 30° + 1 rotating front jet

Waterflow: from 21 gpm

Dimensions: 2" x 4"

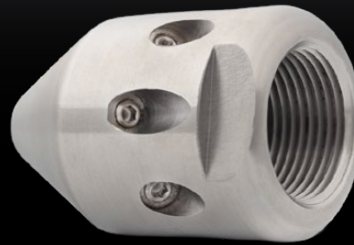
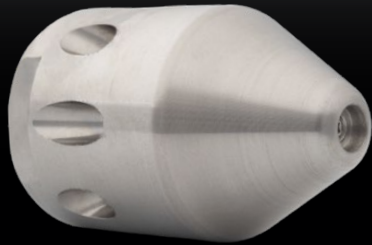
Weight: 0.77 lbs

Price: USD \$333.00

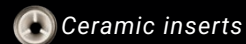
The combination of its conical head and rear jets provides exceptional unclogging power, ensuring every corner of the pipe remains completely free of obstructions.

BASIC CLEANING & UNBLOCKING

V A M P I R E 1 "



Optional front jet



Ceramic inserts

Thread: 1"

Pipe diameter: 8" - 20" (recommended)

Jets: 8 X M6 // 7° - 30°

Waterflow: from 48 gpm

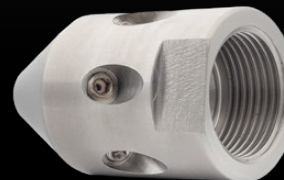
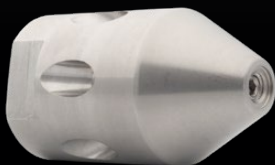
Dimensions: 2" x 3"

Weight: 0.77 lbs

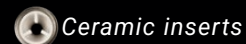
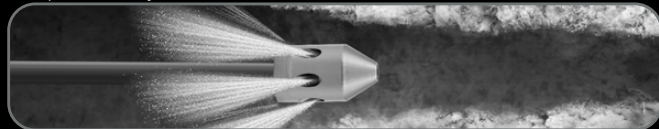
Price: USD \$183.00

The Vampire nozzle stands out for its ability to clean pipes thanks to its design with 35° rear jets, delivering extreme and efficient cleaning performance.

V A M P I R E 3 / 4 "



Optional front jet



Ceramic inserts

Thread: 3/4"

Pipe diameter: 8" - 12" (recommended)

Jets: 6 X M6 // 7° - 30°

Waterflow: from 16 gpm

Dimensions: 1" x 2"

Weight: 0.51 lbs

Price: USD \$105.00

Especially useful for general cleaning tasks, removal of solid waste, soaps, and other blockages, it offers great flexibility for use in pipes of various diameters.


BASIC CLEANING & UNBLOCKING

B A S I C 3 / 4 "



Optional front jet



 *Ceramic inserts*

Thread: 3/4"

Pipe diameter: 8" - 20" (recommended)

Jets: 6 X M6 // 15°

Waterflow: from 16 gpm

Dimensions: 2" x 3"

Weight: 0.95 lbs

Price: USD \$124.00

Its basic, economical, and practical design makes it an efficient option for pipe unclogging, ensuring that obstructions are effectively removed every time.

1" TANK CLEANING NOZZLE



Thread: 1"

Dimensions: 1" x 0,98" (body)

Weight: 10 lbs

Price: **USD \$1,215.00**

3/4" TANK CLEANING NOZZLE



Thread: 3/4"

Dimensions: 1" x 0.74" (body)

Weight: 5.2 lbs

Price: **USD \$930**

H E A D



3 extension bar kit: **USD \$105.00**



Weight: 2 lbs

Dimensions: 6.69" x 1.96"

*Manual operation possible
using only the cutting head*

1 / 2 " & 3 / 8 "
N O Z Z L E S

TARANTULA 1/2"

ADJUSTABLE MODEL



Maintenance kit included



Ceramic inserts



Slow rotation

Thread: 1/2"

Pipe diameter: 4" - 10" (recommended)

Jets: (R) 2 x M6 // (F) 1 x M4

Waterflow: from 11 gpm

Dimensions: 1" x 3"

Weight: 0.79 lbs

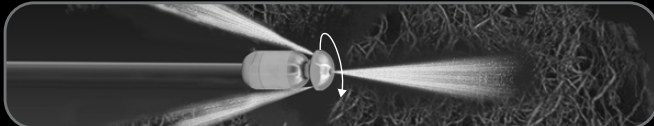
Price: USD \$675.00

Slow-rotation nozzle, focuses the machine's flow into 2 rear jets that spin slowly. Able to cut roots or any kind of hard sediment.

TARANTULA 80



Optional front jet



Ceramic inserts



Slow rotation

Thread: 1/2"

Pipe diameter: 4" - 12" (recommended)

Jets: (R) 2 x M8 // (F) 1 x M8

Waterflow: from 21 gpm

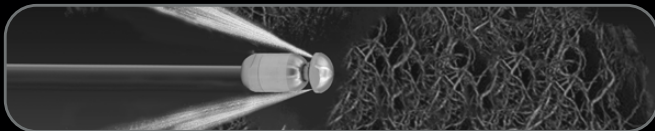
Dimensions: 2" x 5"

Weight: 2.20 lbs

Price: USD \$755.00

Forget about maintenance for a long time. This model has a long service life thanks to the additional adjustable oil reservoir.

TARANTULA 3 / 8 "



Ceramic inserts



Slow rotation

Thread: 3/8"

Pipe diameter: 3" - 8" (recommended)

Jets: (R) 2 x M4

Waterflow: from 11 gpm

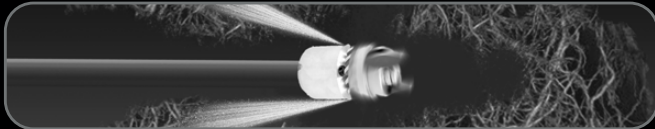
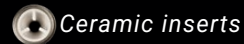
Dimensions: 1" x 3"

Weight: 0.44 lbs

Price: USD \$388.00

Slow-rotating nozzle that focuses the flow into 2 rear jets spinning at low speed, capable of cutting roots or any kind of hard sediment.

ROOT - CUTTER



Thread: 1/2"

Pipe diameter: 4" - 8" (recommended)

Jets: (R) 6 x M4 // (F) 3 x M4

Waterflow: from 11 gpm

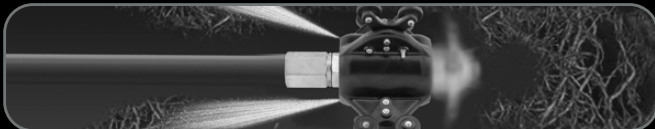
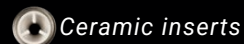
Dimensions: 1" x 3"

Weight: 0.73 lbs

Price: USD \$377.00

It stands out for its ability to cut and remove roots inside pipes. With use, the blades may wear out but are easily replaceable.

HYDRO - SPIN



Thread: 1/2"

Pipe diameter: 4" - 10" (recommended)

Jets: (R) 6 x M4 // (F) 3 x M4

Waterflow: from 11 gpm

Dimensions: 6" x 6"

Weight: 1.92 lbs

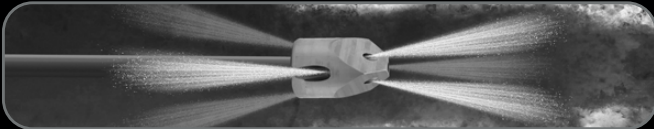
Price: USD \$520.00

With wheels: 5.5 x 6.2 mm
Without wheels: 4.3 x 6.2 mm

BREAKER 1 / 2 "



Optional front jet



Ceramic inserts

Thread: 1/2"

Pipe diameter: 3" - 8" (recommended)

Jets: (R) 3 x M6 // (F) 3 x M4 + 1 x M4

Waterflow: from 11 gpm

Dimensions: 1" x 2"

Weight: 0.44 lbs

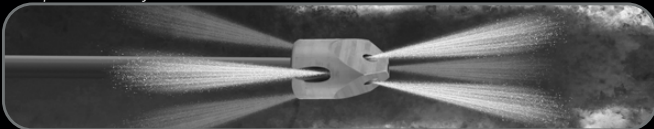
Price: USD \$144.00

Nozzle designed with powerful front jets capable of clearing the toughest blockages.

BREAKER 3 / 8 "



Optional front jet



Ceramic inserts

Thread: 3/8"

Pipe diameter: 3" - 4" (recommended)

Jets: (R) 3 x M4 // (F) 3 x M4 + 1 x M4

Waterflow: from 11 gpm

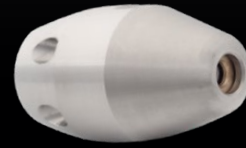
Dimensions: 2" x 1"

Weight: 0.18 lbs

Price: USD \$110.00

3/8" version of the classic Breaker nozzle; its compact size allows it to reach the tightest spots with its original power. Ideal for precision work in narrow or hard-to-reach areas.

ALIEN



Rotating front jet



Ceramic inserts

Thread: 1/2" or 3/8"

Pipe diameter: 4" - 6" (recommended)

Jets: (R) 6 x M4 // 15°

Waterflow: from 11 gpm

Dimensions: 1" x 2"

Weight: 0.37 lbs

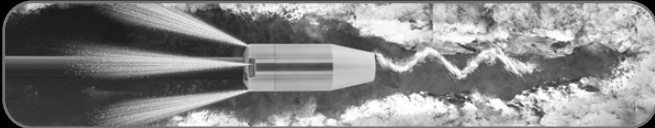
Price: USD \$222.00

Its conical shape and rotating front jet allow it to drill and advance quickly, providing a complete and effective unblocking.

ALIEN TURBO



Rotating front jet



Ceramic inserts

Thread: 1/2" or 3/8"

Pipe diameter: 5" - 12" (recommended)

Jets: (R) 3 x M6 // 7°

Waterflow: from 11 gpm

Dimensions: 2" x 5"

Weight: 1.99 lbs

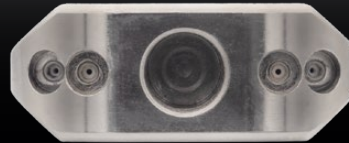
Price: USD \$355.00

Designed for cleaning and unblocking pipes, especially where the removal of difficult blockages and obstructions is required.

PIPE BOTTOM DRAGGING & CLEANING


S A N D | D E B R I S | S T O N E S | G R A V E L

H E A V Y F L O U N D E R



SWIVEL FITTING INCLUDED



 *Ceramic inserts*



Thread: 1/2"

Pipe diameter: 5" - 16" (recommended)

Jets: (R) 4 x M6 // 5°

Waterflow: from 21 gpm

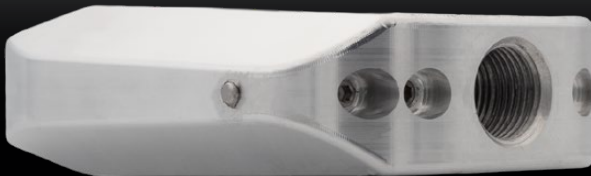
Dimensions: 4" x 6" // 4" x 9" (w/ swivel)

Weight: 6.2 lbs // 7 lbs (w/ thread)

Price: USD \$405.00


Nozzles with low-slope rear jets to carry away all types of sediment, such as gravel, stones or debris.

L I G H T F L O U N D E R



SWIVEL FITTING INCLUDED



 *Ceramic inserts*



Thread: 1/2"

Pipe diameter: 5" - 16" (recommended)

Jets: (R) 4 x M6 (5°)

Waterflow: from 11 gpm

Dimensions: 4" x 6" // 4" x 9" (w/ swivel)

Weight: 2 lbs // 2.92 lbs (w/ thread)

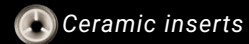
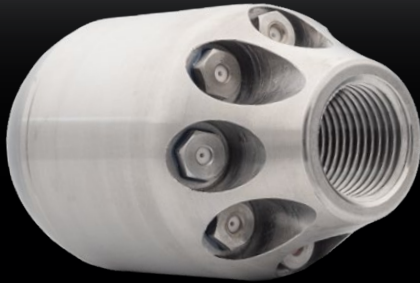
Price: USD \$289.00

The aluminium construction of this nozzle provides a weight reduction of 2 kg compared to its steel counterpart, giving a higher travel speed.

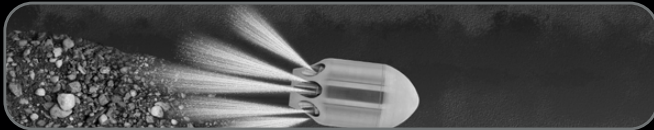
PIPE BOTTOM DRAGGING & CLEANING

S A N D | D E B R I S | S T O N E S | G R A V E L

G R E N A D E 5 0



Ceramic inserts



Thread: 1/2"

Pipe diameter: 5" - 12" (recommended)

Jets: (R) 8 x M8 // 7° - 15°

Waterflow: from 11 gpm

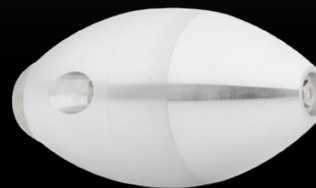
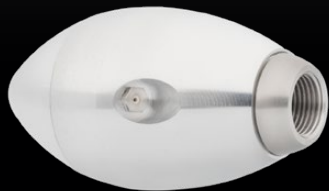
Dimensions: 2" x 4"

Weight: 1.56 lbs

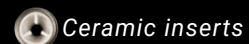
Price: USD \$250.00

Nozzles with low-slope rear jets to carry away all types of sediment, such as gravel, stones or debris.

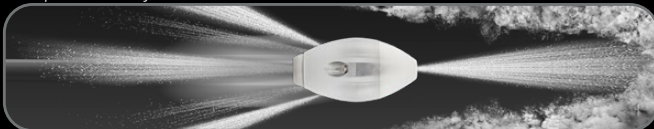
L Y N X



Optional front jet



Ceramic inserts



Thread: 1/2" or 3/8"

Pipe diameter: 5" - 12" (recommended)

Jets: (R) 3 x M8 // 7° o 25° (F) 1 X M8

Waterflow: from 11 gpm

Dimensions: 2" x 5"

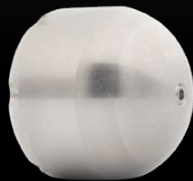
Weight: 1.29 lbs

Price: USD \$211.00

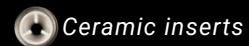
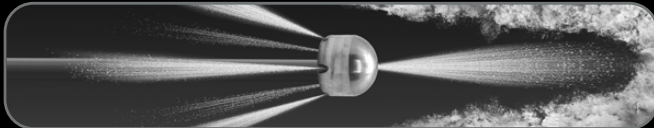
Our Lynx is a lightweight nozzle designed for long distance and bottom cleaning, made of aluminium.

CLEANING & UNBLOCKING

BUTTON



Optional front jet



Ceramic inserts

Thread: 1/2" or 3/8"

Pipe diameter: 3" - 6" (recommended)

Jets: (R) 6 x M4 (7°) // (F) 1 x M4

Waterflow: from 11 gpm

Dimensions: 1" x 1"

Weight: 0.23 lbs

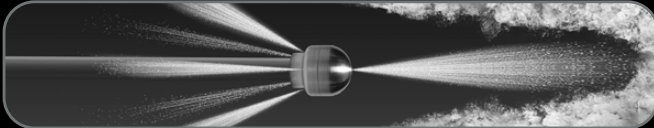
Price: USD \$105.00

Nozzles for daily use for basic unblocking, notable for their small size and high functionality.

B RUN A



Optional front jet



Thread: 1/2" or 3/8"

Pipe diameter: 4" - 8" (recommended)

Jets: (R) 6 drilled jets at 20° // (F) 1 drilled one

Waterflow: from 11 gpm

Dimensions: 1" x 2"

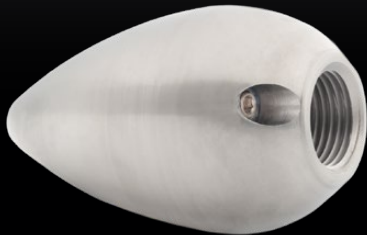
Weight: 0.27 lbs

Price: USD \$55.00

Everyday nozzles for basic unblocking.


CLEANING & UNBLOCKING

BULLET



Optional front jet



 Ceramic inserts

Thread: 1/2"

Pipe diameter: 4" - 10" (recommended)

Jets: (R) 3 x M6 // (F) 1 x M6

Waterflow: from 11 gpm

Dimensions: 2" x 3"

Weight: 1.26 lbs

Price: USD \$150.00


Known for its ability to cover long distances and its high functionality.

VAMPIRE



Optional front jet



 Ceramic inserts

Thread: 1/2"

Pipe diameter: 4" - 8" (recommended)

Jets: (R) 6 x M6 // (F) 1 x M6

Waterflow: from 11 gpm

Dimensions: 1" x 2"

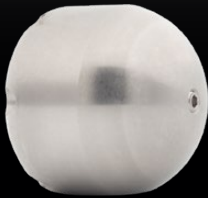
Weight: 0.33 lbs

Price: USD \$100.00

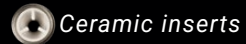
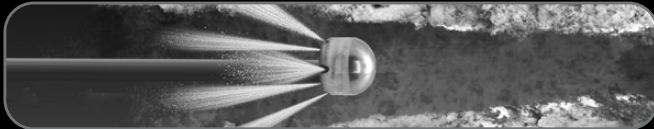
Nozzles with rear jets at different angles for effective pipe cleaning. Ideal for general cleaning, soaps, grease, and all common maintenance tasks.

CLEANING & UNBLOCKING

MIXED BUTTON



Optional front jet



Ceramic inserts

Thread: 1/2" or 3/8"

Pipe diameter: 4" - 10" (recommended)

Jets: (R) 6 x M4 // 7° - 15° // (F) 1 x M4

Waterflow: from 11 gpm

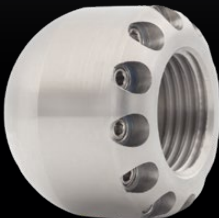
Dimensions: 1" x 1"

Weight: 0.23 lbs

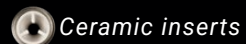
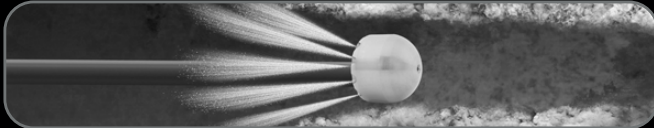
Price: USD \$105.00

Unlike the standard button nozzle, the mixed one combines different jet angles, offering greater versatility for cleaning.

BUTTON 12 JETS



Optional front jet



Ceramic inserts

Thread: 1/2"

Pipe diameter: 4" - 8" (recommended)

Jets: (R) 12 x M4 // 7° // (F) 1 x M4

Waterflow: from 26 gpm

Dimensions: 1" x 1"

Weight: 0.23 lbs

Price: USD \$117.00

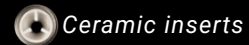
With its 12 jets, this nozzle ensures an extreme cleaning of every single corner inside the pipe.

CLEANING & UNBLOCKING

GRADES 30° 6 JETS



For cleaning



Ceramic inserts

Thread: 1/2" or 3/8"

Pipe diameter: 4" - 8" (recommended)

Jets: (R) 6 x M6 (30°) // (F) 1 x M6

Waterflow: from 11 gpm

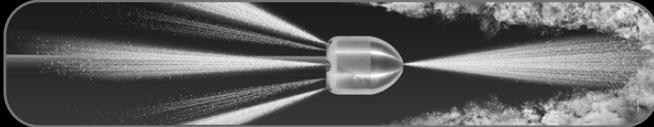
Dimensions: 2" x 2"

Weight: 0.66 lbs

Price: USD \$105.00

Model with 3 rear jets available.

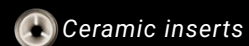
Optional front jet



GRADES 7° 6 JETS



For unclogging



Ceramic inserts

Thread: 1/2" or 3/8"

Pipe diameter: 4" - 8" (recommended)

Jets: (R) 6 x M6 (30°) // (F) 1 x M6

Waterflow: from 11 gpm

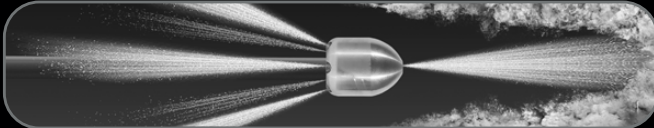
Dimensions: 2" x 2"

Weight: 0.66 lbs

Price: USD \$105.00

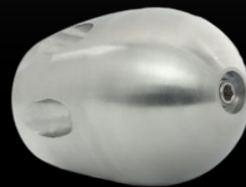
Model with 3 rear jets available.

Optional front jet

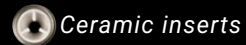
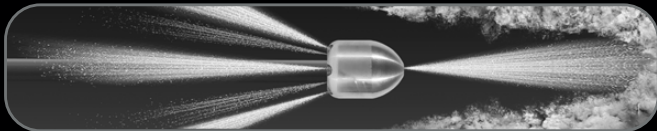


CLEANING & UNBLOCKING

BASIC 3 / 8 "



Optional front jet



Ceramic inserts

Thread: 3/8"

Pipe diameter: 3" - 4" (recommended)

Jets: (R) 6 x M4 // (F) 1 x M4

Waterflow: from 11 gpm

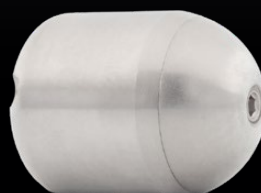
Dimensions: 1" x 1"

Peso: 0.16 lbs

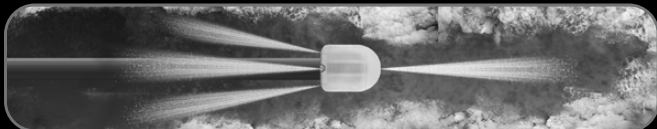
Price: **USD \$90.00**

Compact version of the successful Basic nozzle, perfect for smaller pipelines and equipment, while maintaining the effective design of its larger counterpart.

TIGER 3 / 8 "



Optional front jet



Ceramic inserts

Thread: 3/8"

Pipe diameter: 4" - 6" (recommended)

Jets: (R) 4 x M4 // (F) 1 x M6

Waterflow: from gpm

Dimensions: 1" x 1"


Weight: 0.27 lbs

Price: **USD \$100.00**

The tiger nozzle is ideal for unclogging; its shape and size allow it to penetrate and reach the farthest corners of the pipe.

LIGHT VIBRATING NOZZLE



 *Ceramic inserts*

Thread: 1/2"

Pipe diameter: 4" - 8" (recommended)

Jets: (R) 6 x M4 // (F) 3 x M4

Waterflow: from 11 gpm

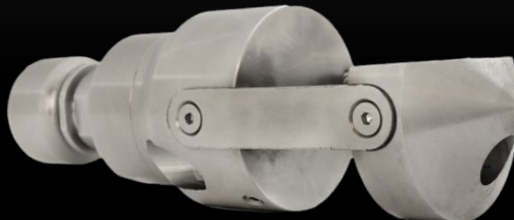
Dimensions: 1" x 3"


Weight: 0.70 lbs

Price: USD \$327.00

Designed to generate powerful vibration, ideal for tough jobs like removing cement and lime scale deposits.

HEAVY VIBRATING NOZZLE



 *Ceramic inserts*

Thread: 1/2"

Pipe diameter: 6" - 12" (recommended)

Jets: (R) 3 X M4 // (F) 2 X M8

Waterflow: from 11 gpm

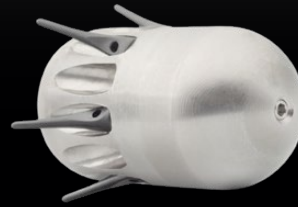
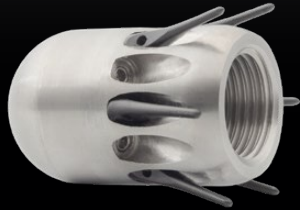
Dimensions: 2" x 6"

Weight: 2.86 lbs

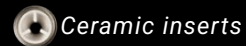
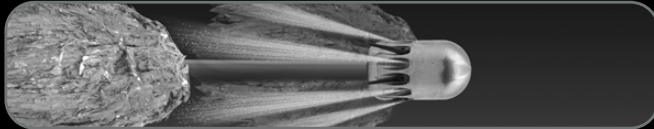
Price: USD \$477.00

With increased size and weight, it performs the same function but is aimed at larger deposits and pipelines.

BASIC WIPE-CATCHER



Optional front jet



Ceramic inserts

Thread: 1/2"

Pipe diameter: 3" - 8" (recommended)

Jets: (R) 6 x M4 // (F) 1 x M4

Waterflow: from 11 gpm

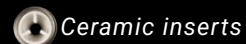
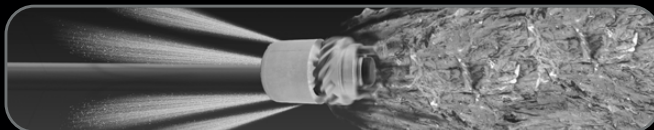
Dimensions: 1" x 2"

Weight: 0.33 lbs

Price: USD \$183.00

Specifically designed to hook and remove rags and other textile waste from pipes, the Sacatrapos nozzle stands out for its efficiency and ease of use.

ROTATORY WIPE-CATCHER



Ceramic inserts

Thread: 1/2"

Pipe diameter: 3" - 8" (recommended)

Jets: (R) 6 x M4 // (F) 3 x M4

Waterflow: from 11 gpm

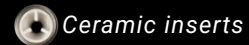
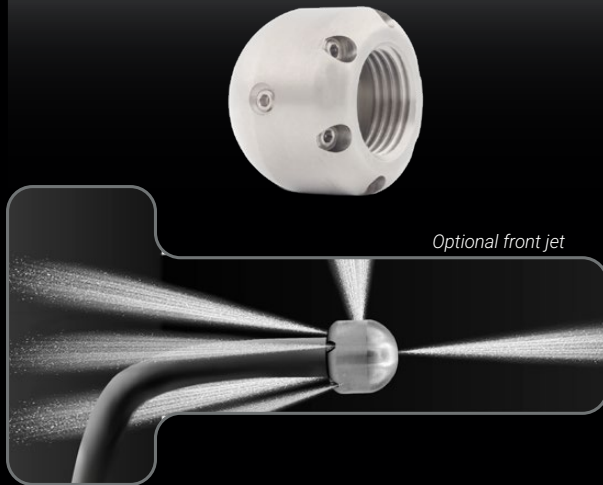
Dimensions: 1" x 3"

Weight: 0.59 lbs

Price: USD \$327.00

Using its rotating turbine, it effectively hooks and removes rags and other textile waste from pipes.

ANACONDA THE SMALL ONE



Ceramic inserts

Thread: 1/2" or 3/8"

Pipe diameter: 3" - 6" (recommended)

Jets: (R) 6 x M4 // 7° // (L) 1 x M4 (F) 1 x M4

Waterflow: from 11 gpm

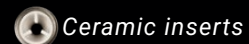
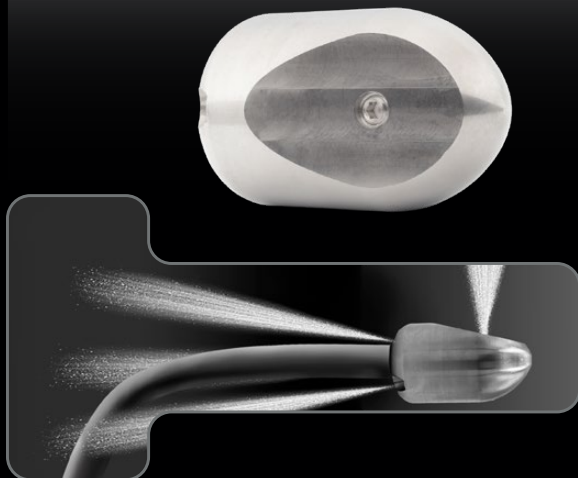
Dimensions: 1" x 1"

Weight: 0.23 lbs

Price: USD \$105.00

Known for its versatility and functionality, it features a side jet that allows quick and easy direction changes to navigate pipe bends.

ANACONDA THE BIG ONE



Ceramic inserts

Thread: 1/2" or 3/8"

Pipe diameter: 4" - 8" (recommended)

Jets: (R) 3 x M6 // 15° // (L) 1 x M6

Waterflow: from 11 gpm

Dimensions: 2" x 3"

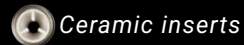
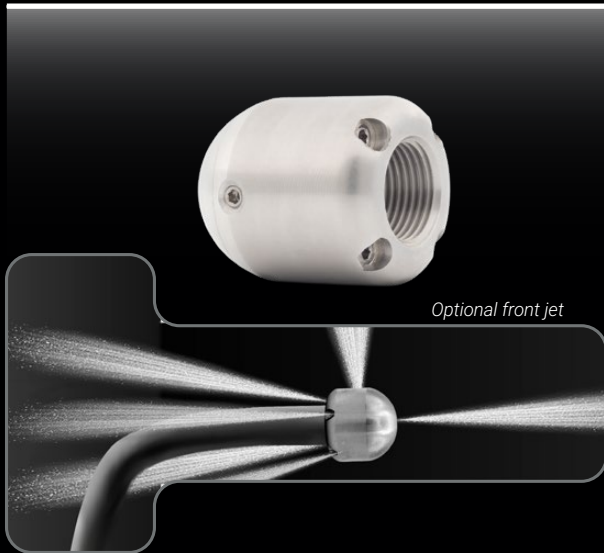
Weight: 0.84 lbs

Price: USD \$144.00

Designed to rotate inside inspection chambers using its side jet.

ELBOWS | TEES | SLOPED LINES

A N A C O N D A 3 / 8 "



Ceramic inserts

Thread: 3/8"

Pipe diameter: 4" - 6" (recommended)

Jets: (R) 4 x M4 + (L) M4 // (F) 1 x M6

Waterflow: from 8 gpm

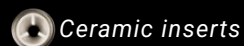
Dimensions: 2" x 2"

Weight: 0.27 lbs

Price: USD \$100.00

It stands out for its versatility and functionality, with a side jet that allows you to change direction and pass pipe bends quickly and easily.

C A M E R A N O Z Z L E



Ceramic inserts

Thread: 1/2"

Pipe diameter: 4" - 10" (recommended)

Jets: (R) 3 x M4 (15°)

Waterflow: from 11 gpm

Dimensions: 1" x 2"

Weight: 0.54 lbs

Price: USD \$200.00

Designed for easy pushing and handling of the camera head in manual pipe inspections.

1 / 4 " & 1 / 8 "
N O Z Z L E S

CLEANING & UNBLOCKING

TIGER



Thread: 1/4"

Pipe diameter: 3" - 6" (recommended)

Jets: (R) 6 x M4 // 7° // (F) 1 x M4

Waterflow: from 11 gpm

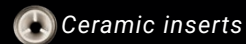
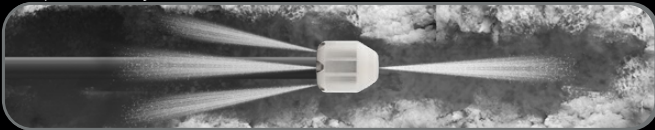
Dimensions: 1" x 1"

Weight: 0.12 lbs

Price: USD \$100.00

It stands out for its high thrust and small dimensions, allowing it to pass through elbows and small pipes.

Optional front jet



Ceramic inserts

BREAKER



Thread: 1/4"

Pipe diameter: 3" - 6" (recommended)

Jets: (R) 6 x M4 // 7° // (F) 3 x M4

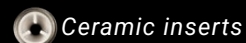
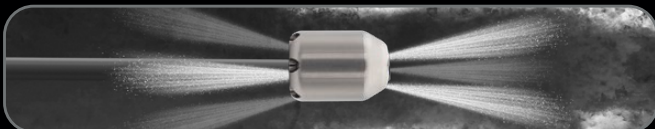
Waterflow: from 11 gpm

Dimensions: 1" x 1"

Weight: 0.16 lbs

Price: USD \$105.00

Our Breaker is distinguished by its ability to unblock pipes thanks to its head with three front jets, providing extreme and efficient cleaning.

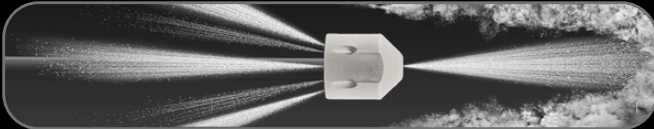


Ceramic inserts

B A S I C



Optional front jet



Thread: 1/4"

Pipe diameter: 2" - 4" (recommended)

Jets: (R) 6 drilled jets // (F) 1 x M4

Waterflow: from 11 gpm

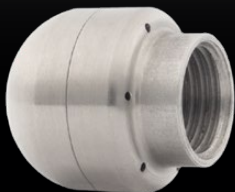
Dimensions: 1" x 1"

Weight: 0.03 lbs

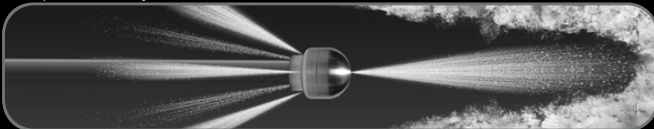
Price: USD \$50.00

Nozzle designed for unblocking and cleaning pipes in confined spaces. Its compact design allows access to narrower and more difficult areas of pipes.

B R U N A



Optional front jet



Thread: 1/4"

Pipe diameter: 2" - 4" (recommended)

Jets: (R) 6 drilled jets (15°) (F) 1 optional drilled jet

Waterflow: from 11 gpm

Dimensions: 1" x 1"

Weight: 0.05 lbs


Price: USD \$50.00

Our Bruna 1/4" nozzle is ideal for companies looking for an economical and powerful nozzle, made in two parts for water channelling and with a very affordable price.

ROOT-CUTTERS

ROOT-CUTTER



 *Ceramic inserts*

Thread: 1/4"

Pipe diameter: 2" - 6" (recommended)

Jets: (R) 6 x M4 // (F) 3 x M4

Waterflow: from 11 gpm

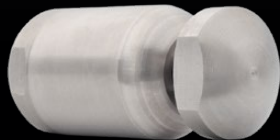
Dimensions: 1" x 2"


Weight: 0.34 lbs


Price: USD \$305.00

This nozzle is distinctive for its ability to cut and remove roots inside pipes thanks to its rotating heads with cutting parts and six rear jets.

TARANTULA



 *Ceramic inserts*

 *Slow rotation*

Thread: 1/4"

Pipe diameter: 3" - 6" (recommended)

Jets: (R) 2 x M4

Waterflow: from 11 gpm

Dimensions: 1" x 2"

Weight: 0.40 lbs

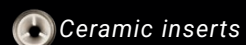
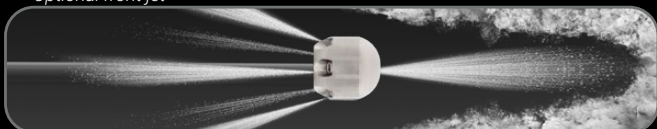
Price: USD \$350.00

Thanks to its automatically rotating dual-jet head, it provides extreme cleaning and cutting of any roots it encounters.

K-TURBO 6 J E T S



Optional front jet



Ceramic inserts

Thread: 1/8"

Pipe diameter: 2" - 4" (recommended)

Jets: (R) 6 x M4 // (F) 1 optional drilled jet

Waterflow: from 11 gpm

Dimensions: 1" x 1"

Weight: 0.04 lbs

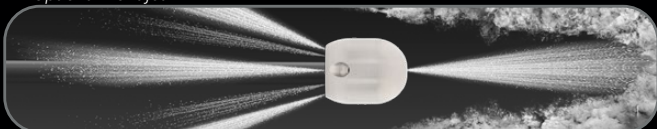
Price: USD \$78.00

It is particularly useful for general cleaning and debris removal work on small diameter pipes.

K-TURBO 3 J E T S



Optional front jet



Thread: 1/8"

Pipe diameter: 2" - 3" (recommended)

Jets: (R) 3 drilled jets // (F) 1 optional drilled jet

Waterflow: from 11 gpm

Dimensions: 1" x 1"


Weight: 0.03 lbs

Price: USD \$39.00

Its compact design, rear and front jets make it an indispensable tool for pipe cleaning jobs in sinks and other applications.

ROTATORY WIPE-CATCHER



 *Ceramic inserts*

Thread: 1/4"

Pipe diameter: 2" - 6" (recommended)

Jets: (R) 6 x M4 // (F) 3 x M4

Waterflow: from 11 gpm

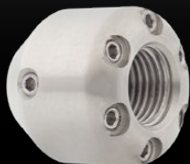
Dimensions: 1" x 2"

Weight: 0.34 lbs

Price: USD \$305.00


The 1/4" Rotatory Wipe Catcher features a rotating turbine which catches the rags when pulling backwards and can remove textile and other debris from the pipe.

ANACONDA



Optional front jet



 *Ceramic inserts*

Thread: 1/4"

Pipe diameter: 3" - 6" (recommended)

Jets: (R) 6 x M4 // 7° // (L) 1 x M4 (F) 1 x M4

Waterflow: from 11 gpm

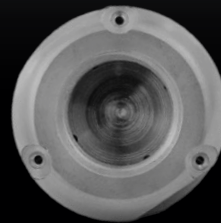
Dimensions: 1" x 1"

Weight: 0.12 lbs

Price: USD \$100.00

Its compact design makes it easy to pass through bends and bifurcations, minimising wear and tear and the need for maintenance, providing a reliable and durable cleaning solution.

ALIEN 1 / 4 "



Rotating front jet



Thread: 1/4"

Pipe diameter: 3" - 6" (recomended)

Jets: (R) 3 drilled holes // 1 rotatable front hole

Waterflow: from 11 gpm

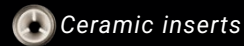
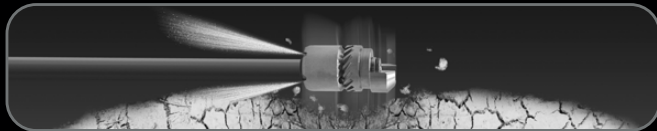
Dimensions: 1" x 2"

Weight: 0.30 lbs

Price: USD \$204.00

Bundles the power in a rotating front jet ideal for blockages in small sewer pipes.

MINI VIBRATING NOZZLE



Thread: 1/4"

Pipe diameter: 2" (recommended)

Jets: (R) 6 x M4 // (F) 3 x M4

Waterflow: from 11 gpm

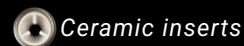
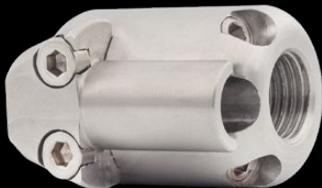
Dimensions: 1" x 2"

Weight: 0.36 lbs

Price: USD \$277.00

Designed to generate a powerful vibration, ideal for tough jobs such as removing cement and limescale deposits.

CAMERA NOZZLE



Thread: 1/4"

Pipe diameter: 3" - 8" (recommended)

Jets: (R) 3 x M6

Waterflow: from 11 gpm

Dimensions: 1" x 2"

Weight: 0.29 lbs

Price: USD \$166.00

Designed for easy pushing and handling of the camera head in manual pipe inspections.

NOZZLE HOLDER



Designed to be attached to your work belt for quick access to your 4 favourite nozzles, you can have nozzles at your fingertips to suit the needs of the job, quickly and efficiently.

Price: USD \$70.00

Available for 1/2" | 3/8" | 1/4" | 1/8" nozzles and with the possibility to combine all of them in mixed form on the same key ring.

Dimensions: 1" x 2"

Weight: 0.81 lbs



TANK CLEANER 1/2"



Thread: 1"

Dimensions: 9" x 6" (body)

Weight: 3.7 lbs

Price: USD \$577.00

FLEX HOSES



Hose: 1/4"

Thread: 1/8"

Pipes: from 1" to 6"

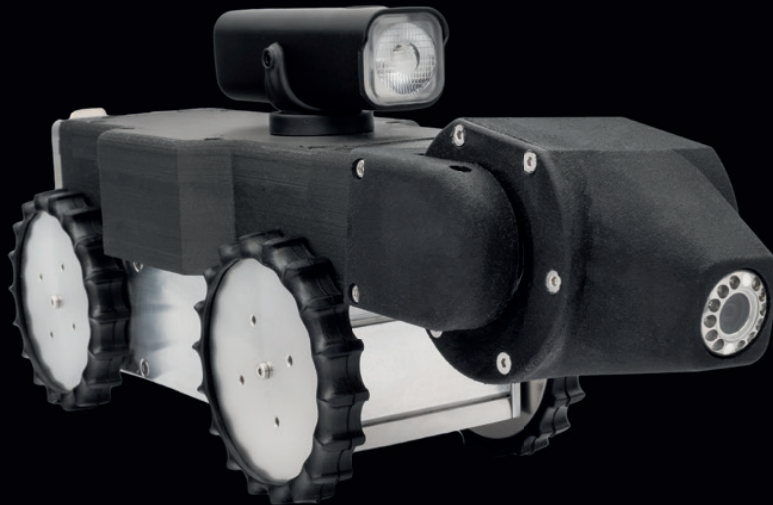
3,2 ft: **USD \$189.00**

49 ft: **USD \$266.00**

66 ft: **USD \$344.00**

*Only hoses included,
nozzles are not included.*

A L P H A 3 0 0



Robot Body

Material: Aluminum, stainless steel, iron, and XT plastic

Drive System: Four-wheel drive

Working Range: Pipes from 160mm

Protection: IP54

Inclination Sensor: Yes

Dimensions: 9 × 4.3 × 5.5 inch

Weight: 81.5 lbs



Camera

Lighting: Adjustable high-intensity LED

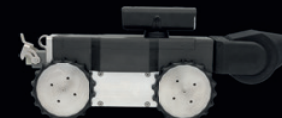
Focus: Automatic

Resolution: 720 × 576

Field of View: 130°

Emitter: 512Hz

Price: **USD \$8,900.00**



ALPHA 300



Control Case

Keyboard & USB Output

External Dimensions: 207 × 174 × 246 mm

Weight: 231 lbs

Screen Size: 18.5"

Resolution: 1024 × 600 HD



Cable Reel

Cable Length: 98 feet *(includes meter counter)*

Dimensions: 14× 16× 14 inch

Weight: 24 lbs

Tension Resistance & PUR Coating

Software & System

Private Software

Computer: 12GB RAM & 256GB SSD

Features: *Video recording, inclinometers, image capture, text/symbol insertion*

FULL MAINTENANCE KIT

TARANTULA 1"



USD \$99.00

FULL MAINTENANCE KIT

TARANTULA 3/4"



USD \$94.00

FULL MAINTENANCE KIT

TARANTULA 80



USD \$61.00

FULL MAINTENANCE KIT

TARANTULA 1/2"



USD \$72.00

FULL MAINTENANCE KIT
ALIEN 1"



USD \$116.00

FULL MAINTENANCE KIT

ALIEN 3/4"



USD \$89.00

FULL MAINTENANCE KIT

ALIEN TURBO



USD \$116.00

FULL MAINTENANCE KIT

ALIEN 1/2"



USD \$89.00



R O B E R T O B R U N A

m.duhau@sewercleaningnozzles.com

www.sewercleaningnozzles.com

OFFICE: (213)283-7292

